



MONTHLY MEMBERSHIP PROGRESS REPORT

District 318 D

Results as of: 05/31/2018

GMT: N S SANKAR

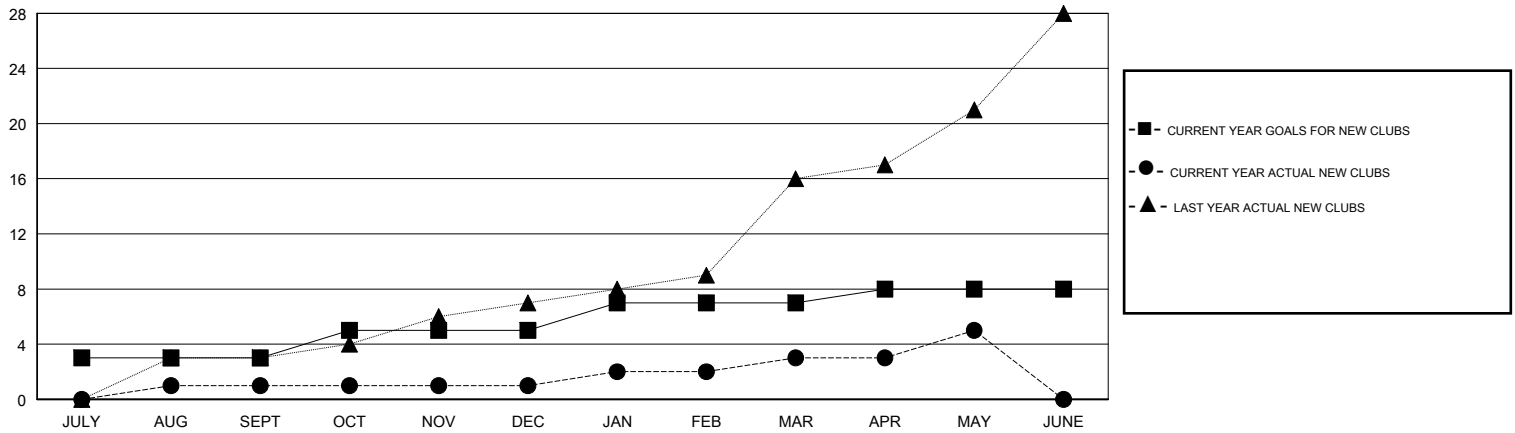
LOCATION INDIA

GMT CA

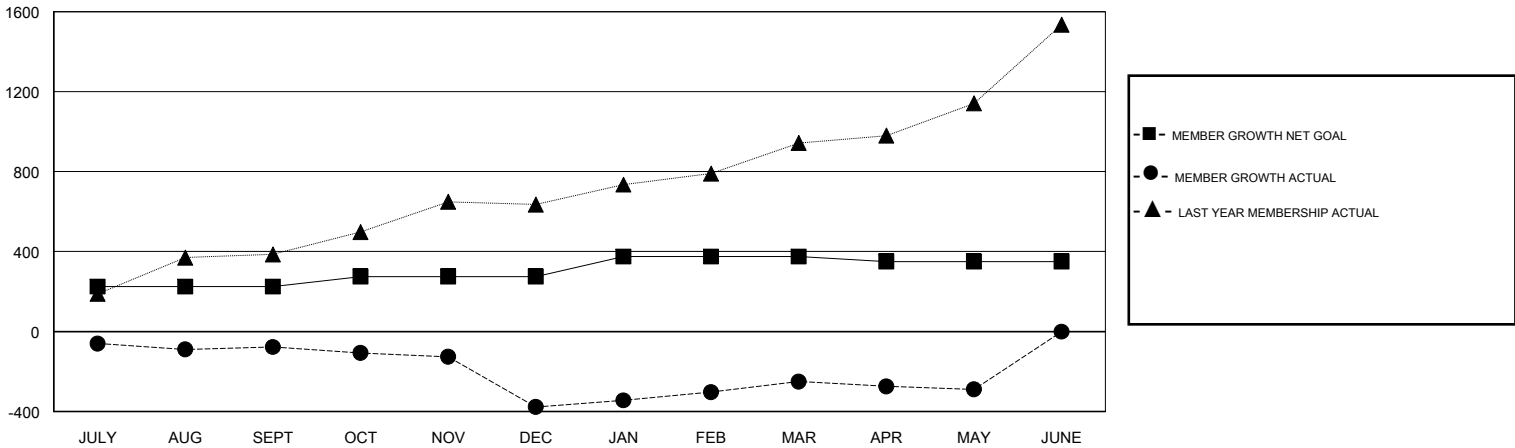
Clubs			
RESULTS FOR 2017-2018			
QUARTER	NEW CLUB GOAL	NEW CLUBS	DROPPED CLUBS
JULY/AUG/SEPT	3	1	0
OCT/NOV/DEC	2	0	10
JAN/FEB/MAR	2	2	1
APR/MAY/JUNE	1	2	0

Members			
RESULTS FOR 2017-2018			
QUARTER	MEMBER GROWTH NET GOAL	MEMBER GROWTH ACTUAL	DROPPED MEMBERS ACTUAL (including transfers)
JULY/AUG/SEPT	225	84	157
OCT/NOV/DEC	50	91	388
JAN/FEB/MAR	100	261	69
APR/MAY/JUNE	-25	164	200

GOALS AND ACTUAL NEW CLUBS CUMULATIVE



GOALS AND ACTUAL MEMBERS CUMULATIVE



DROPPED CLUBS: 11	89 CLUBS OF 150 ADDED 1 OR MORE NEW MEMBERS	<u>GENDER DISTRIBUTION</u> MALE 4,536 (85.25%) FEMALE 785 (14.75%) Women Percentage Fiscal Year Goal: 30%
<u>DROPPED MEMBERS</u> DECEASED 13 CLUB CANCELLED 233 OTHER 568 TOTAL 814	CLICK HERE FOR CUMULATIVE MEMBERSHIP DATA	TOTAL FAMILY UNIT MEMBERS 1,254 FAMILY MEMBERS PAYING HALF DUES 652